



**2019 RCYC Open Optimist Regatta**  
**The Royal Canadian Yacht Club**  
**Sailing Instructions**  
**June 22-23, 2019**

*The notation '[DP]' in a rule in the SI means that the penalty for a breach of that rule may, at the discretion of the protest committee, be less than disqualification.*

*The notation '[NP]' in a rule in the Notice of Race (NOR), Sailing Instructions (SIs) or other additional document that is a rule means that the penalty for a breach of that rule will not be grounds for a protest by a sailboat.*

**1. RULES**

- 1.1 The regatta will be governed by the rules as defined in The Racing Rules of Sailing.
- 1.2 Racing rules will be changed as follow:
  - 1.2.1 The preamble to RRS Part 4 and Rule 40 is changed to require adequate personal flotation devices to be worn at all times while afloat, except briefly while changing or adjusting clothing or personal equipment. [DP]
- 1.3 RRS Appendix T – Arbitration will apply.

**2. NOTICES TO COMPETITORS**

- 2.1 Notices to competitors will be posted on the official notice board located at the RCYC Junior Club.

**3. CHANGES TO SAILING INSTRUCTIONS**

- 3.1 Any change to the sailing instructions will be posted before 0900 on the day it will take effect, except that any change to the schedule of races will be posted by 2000 on the day before it will take effect.

**4. SIGNALS MADE ASHORE**

- 4.1 Signals made ashore will be displayed at the flagpole at the RCYC Junior Club.
- 4.2 When flag AP is displayed ashore, '1 minute' is replaced with 'not less than 45 minutes in the race signal AP.
- 4.3 Flag D with one sound means 'The warning signal will be made not less than 45 minutes after flag D is displayed or first warning time, which ever is later. Boats shall not leave the harbour until this signal is made. [DP]

**5. SCHEDULE OF RACES**

- 5.1 The first warning signal for June 22<sup>nd</sup> will be 1055 hours.
- 5.2 The first warning signal for June 23<sup>rd</sup> will be 1030 hours
- 5.3 On the last day of the regatta no warning signal will be made after 1530 hours.

5.4 Number of races:

Course	Number of races	Maximum number of races/days
Charlie	12	7

**6. CLASS FLAGS**

6.1 Class flags will be:

Optimist Champion                      Optimist Class insignia in a colour other than green on white background

**7. RACING AREAS**

7.1 Attachment B shows the location of racing areas.

7.2 The race course for the classes are:

Optimist Champion                      Charlie Course

**8. THE COURSES**

8.1 The diagrams in Attachment A show the courses, the order in which marks are to be passed, and the side on which each mark is to be left.

8.2 No later than the warning signal, the race committee signal vessel will display the course to be sailed.

**9. MARKS**

9.1 Charlie Course marks shall be:

Mark	Original	Change for SI 11.1
Start	Red	
1	Yellow	Orange
1a	Red	
2	Yellow	
Finish	Red	

9.2 A race committee boat signalling a change of a leg of the course is a mark as provided in instruction 11.2.

**10. THE START**

10.1 Races will be started by using RRS 26 with the warning signal made 5 minutes before the starting signal.

10.2 The starting line will be between a staff displaying an orange flag on the Race Committee Vessel and the course side of the nearby starting mark.

10.3 Boats whose warning signal has not been made shall avoid the starting area during the starting sequence for other races. [DP]

10.4 A boat that does not start within 4 minutes after her starting signal will be scored Did Not Start without a hearing. This changes RRS A4 and A5.

**11. CHANGE OF THE COURSE**

- 11.1 To change the next leg of the course, the race committee will lay a new mark (or move the finishing line) and remove the original mark as soon as practicable. When in a subsequent change a new mark is replaced, it will be replaced by an original mark
- 11.2 Except at a gate, boats shall pass between the race committee vessel signalling the change of the next leg and the nearby mark, leaving the mark to port and the race committee vessel to starboard. This changes RRS 28.

**12. THE FINISH**

- 12.1 The finishing line will be between a staff displaying an orange flag on the Race Committee Vessel and the course side of the finishing mark.

**13. TIME LIMITS AND TARGET TIMES**

- 13.1 Time limits and target times are as follows:

Class	Time Limit	Mark 1 Time limit	Target Time
Optimist Champion	60 minutes	20 minutes	30 minutes

- 13.2 If no boat has passed Mark 1 within the Mark 1 time limit the race will be abandoned. Failure to meet the target time will not be grounds for redress. This changes RRS 62.1(a).
- 13.3 Boats failing to finish within 20 minutes after the first boat sails the course and finishes will be scored Did Not Finish without a hearing. This changes RRS 35, A4 and A5.
- 13.4 Finishing on Course: The Race Committee may, at its discretion, award points to a boat, equivalent to the boat’s position in a race, prior to the expiration of the Finishing Window. The Race Committee determines the method and order. This changes RRS 35, A4 and A5.

**14. PROTESTS AND REQUESTS FOR REDRESS**

- 14.1 Protest forms are available at the RCYC Sailing Office. Protests and requests for redress or reopening shall be delivered there within the appropriate time limit.
- 14.2 For each class, the protest time limit is 45 minutes after the finish boat for that course returns to the dock.
- 14.3 Notices will be posted no later than 30 minutes after the protest time limit to inform competitors of hearings in which they are parties or named as witnesses. Hearings will be held in the protest room, located at in the protest room, located at south end of the main clubhouse.
- 14.4 Notices of protests by the race committee, technical committee or protest committee will be posted to inform boats under RRS 61.1(b).

**15. SCORING**

- 15.1 Two races are required to be completed to constitute a series.
  - (a) When fewer than 5 races have been completed, a boat’s series score will be the total of her race scores.
  - (b) When from 5 or more races have been completed, a boat’s series score will be the total of her race scores excluding her worst score.

**16. SAFETY REGULATIONS**

- 16.1 Boats shall checkout before leaving the launch area and check in when arriving back to shore after racing. [DP] [NP]
- 16.2 Check-Out and Check-In: Each boat shall sail behind the stern of the Race Committee Vessel and check in prior to racing each day or upon returning to the race area if the boat has left for repair or any other reason. [DP] [NP]
- 16.3 A boat that retires from a race shall notify the race committee as soon as possible. [DP] [NP]

**17. REPLACEMENT OF CREW OR EQUIPMENT**

- 17.1 Substitution of competitors will not be allowed without prior written approval of the race committee. [DP]

**18. EQUIPMENT AND MEASUREMENT CHECKS**

- 18.1 On the water, a boat can be instructed by a member of the race committee or the technical committee to proceed immediately to a designated area for inspection.

**19. SUPPORT BOATS**

- 19.1 Team leaders, coaches and other support persons shall stay outside areas where boats are racing from the time of the preparatory signal for the first class to start until all boats have finished or retired or the race committee signals a postponement, general recall or abandonment. [DP] [NP]
- 19.2 In a general emergency situation, all support boats shall be utilized as safety boats and be under the direction of the course race officer.

**20. TRASH DISPOSAL**

- 20.1 Trash may be placed aboard support or official boats.

**21. RADIO COMMUNICATION**

- 21.1 Except in an emergency, a boat that is racing shall not make voice or data transmissions and shall not receive voice or data communication that is not available to all boats. [DP] [NP]

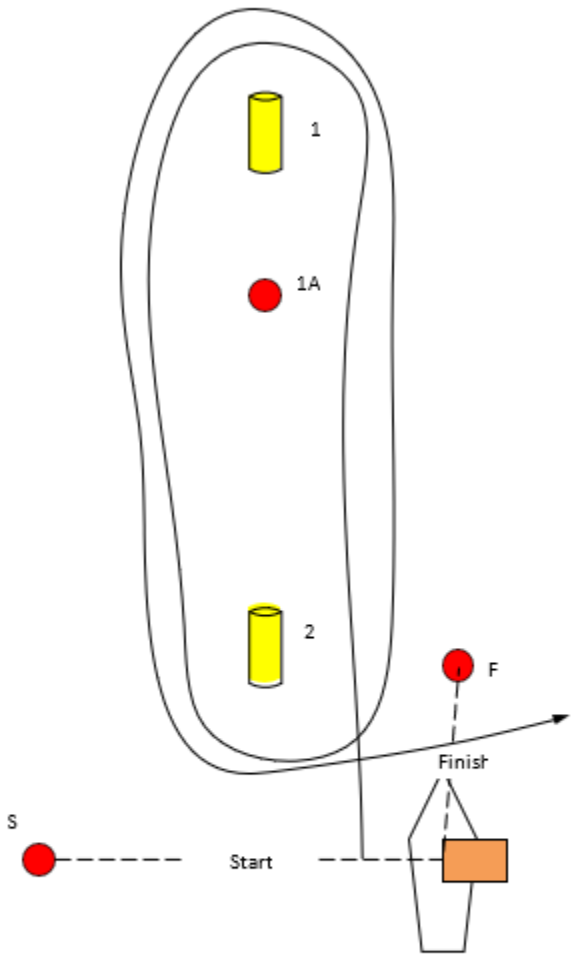
**22. PRIZES**

- 22.1 Prizes will be given as follows: 1st, 2nd, and 3rd place finishers as well as any other prizes the organizers deem deserved.

**23. DISCLAIMER OF LIABILITY**

- 23.1 Competitors participate in the regatta entirely at their own risk. See RRS 4, Decision to Race. The organizing authority will not accept any liability for material damage or personal injury or death sustained in conjunction with or prior to, during, or after the regatta.

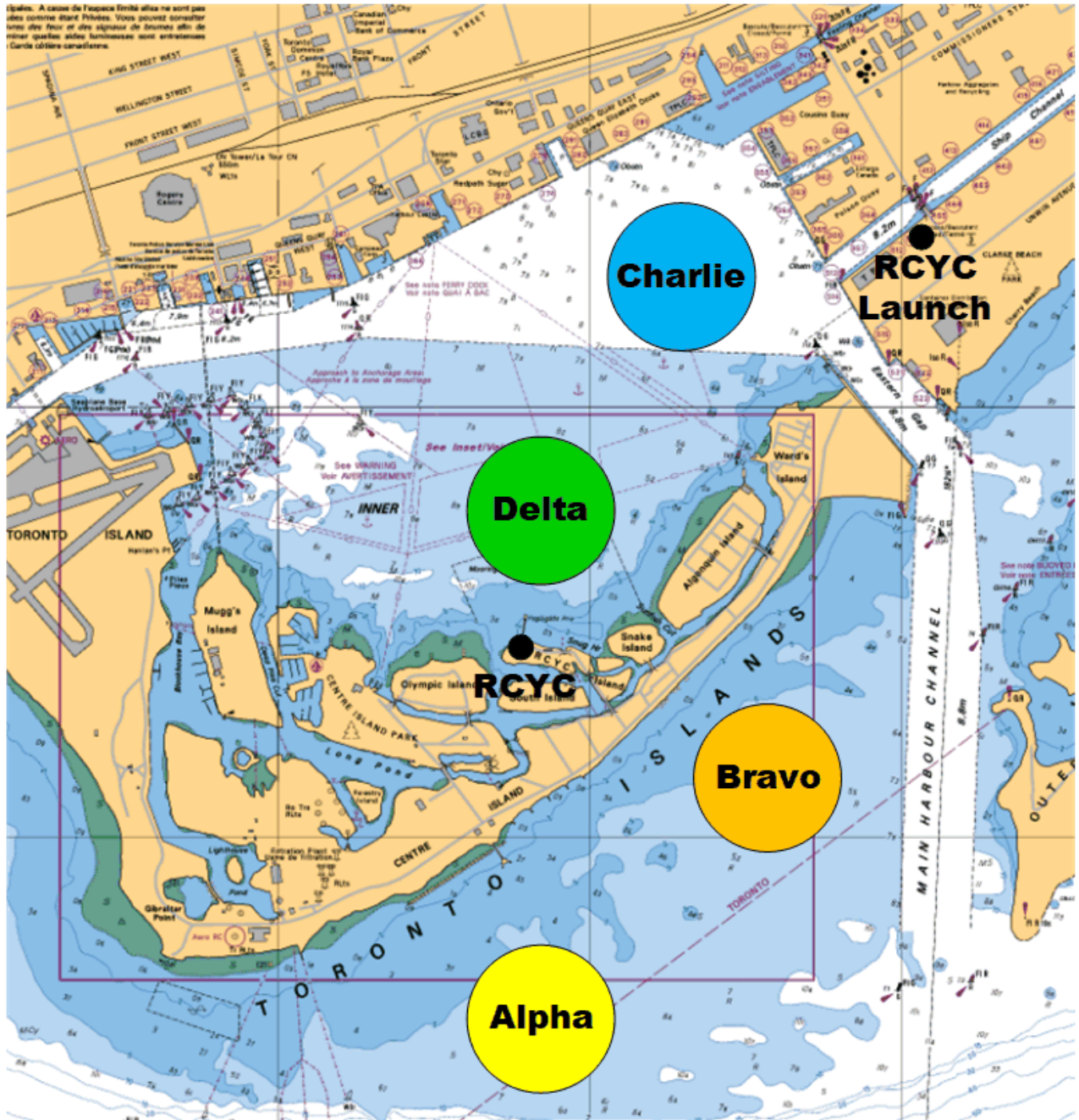
ADDENDUM A – COURSES



Numeral Pennant 2  
Start---1---2---1---2---Finish

Numeral Pennant 2 over Flag S  
Start---1a---2---1a---2---Finish

## ADDENDUM B – RACE AREAS



### Race Committee VHF Channels

	Alpha	Bravo	Charlie	Delta
<b>Channel</b>	9	71	69	72