



**2019 Lake Sailing Skiff Association Regatta
The Royal Canadian Yacht Club
Sailing Instructions
June 22-23, 2019**

The notation '[DP]' in a rule in the SI means that the penalty for a breach of that rule may, at the discretion of the protest committee, be less than disqualification.

The notation '[NP]' in a rule in the Notice of Race (NOR), Sailing Instructions (SIs) or other additional document that is a rule means that the penalty for a breach of that rule will not be grounds for a protest by a sailboat.

1. RULES

- 1.1 The regatta will be governed by the rules as defined in The Racing Rules of Sailing.
- 1.2 Racing rules will be changed as follow:
 - 1.2.1 The preamble to RRS Part 4 and Rule 40 is changed to require adequate personal flotation devices to be worn at all times while afloat, except briefly while changing or adjusting clothing or personal equipment. [DP]
 - 1.2.2 For Course Alpha only, RRS 44.1 is changed so that the Two-Turns Penalty is replaced by the One-Turn Penalty.
- 1.3 RRS Appendix T – Arbitration will apply.

2. NOTICES TO COMPETITORS

- 2.1 Notices to competitors will be posted on the official notice board located on the main Veranda of the Island Clubhouse.

3. CHANGES TO SAILING INSTRUCTIONS

- 3.1 Any change to the sailing instructions will be posted before 0900 on the day it will take effect, except that any change to the schedule of races will be posted by 2000 on the day before it will take effect.

4. SIGNALS MADE ASHORE

- 4.1 Signals made ashore will be displayed at the flagpole in front of the RCYC Sailing Office.
- 4.2 When flag AP is displayed ashore, '1 minute' is replaced with 'not less than 60 minutes in the race signal AP.'

5. SCHEDULE OF RACES

- 5.1 The first warning signal for June 22nd will be 1055 hours.
- 5.2 The first warning signal for June 23rd will be 1030 hours.
- 5.3 On the last day of the regatta no warning signal will be made after 1530 hours.

5.4 Number of races:

Course	Number of races	Maximum number of races/days
Alpha & Bravo	12	7

6. CLASS FLAGS

6.1 Class flags will be:

29er	29er class insignia on white background
420	420 Class insignia on white background
Albacore	Albacore class insignia on white background
Contender	Contender class insignia on white background
I-14	I-14 class insignia on white background
Laser 4.7	Laser Class insignia on yellow background
Laser	Laser Class insignia on white background
Laser Radial	Laser Class insignia on green background
Wayfarer	Wayfarer Class insignia on white background

7. RACING AREAS

7.1 Attachment B shows the location of racing areas.

7.2 The race course for the classes are:

29er	Alpha Course
420	Bravo Course
Albacore	Bravo Course
Contender	Alpha Course
I-14	Alpha Course
Laser 4.7	Bravo Course
Laser	Bravo Course
Laser Radial	Bravo Course
Wayfarer	Bravo Course

8. THE COURSES

8.1 The diagrams in Attachment A show the courses, the order in which marks are to be passed, and the side on which each mark is to be left.

8.2 No later than the warning signal, the race committee signal vessel will display the course to be sailed.

9. MARKS

9.1 Alpha Course marks shall be:

Mark	Original	Change for SI 11.1
Start	Green Inflatable	
1	Orange Inflatable	Yellow
2	Orange Inflatable	
3	Orange Inflatable	
Finish	Red Inflatable	

9.2 Bravo Course marks shall be:

Mark	Original	Change for SI 11.1
Start	Green inflatable	
1	Yellow inflatable	Orange Inflatable
2	Yellow inflatable	
3	Yellow inflatable	
Finish	Red Inflatable	

9.3 A race committee boat signalling a change of a leg of the course is a mark as provided in instruction 11.2.

10. THE START

10.1 Races will be started by using RRS 26 with the warning signal made 5 minutes before the starting signal.

10.2 The starting line will be between a staff displaying an orange flag on the Race Committee Vessel and the course side of the nearby starting mark.

10.3 Boats whose warning signal has not been made shall avoid the starting area during the starting sequence for other races. [DP]

10.4 A boat that does not start within 4 minutes after her starting signal will be scored Did Not Start without a hearing. This changes RRS A4 and A5.

11. CHANGE OF THE NEXT LEG OF THE COURSE

11.1 To change the next leg of the course, the race committee will lay a new mark (or move the finishing line) and remove the original mark as soon as practicable. When in a subsequent change a new mark is replaced, it will be replaced by an original mark

11.2 Except at a gate, boats shall pass between the race committee vessel signalling the change of the next leg and the nearby mark, leaving the mark to port and the race committee vessel to starboard. This changes RRS 28.

12. THE FINISH

12.1 The finishing line will be between a staff displaying an orange flag on the Race Committee Vessel and the course side of the finishing mark.

13. TIME LIMITS AND TARGET TIMES

13.1 Time limits and target times are as follows:

Class	Time Limit	Mark 1 Time limit	Target Time
29er	60 minutes	20 minutes	35 minutes
420	90 minutes	30 minutes	45 minutes
Albacore	90 minutes	30 minutes	45 minutes
Contender	60 minutes	20 minutes	35 minutes
I-14	60 minutes	20 minutes	35 minutes
Laser 4.7	90 minutes	30 minutes	45 minutes
Laser	90 minutes	30 minutes	45 minutes
Laser Radial	90 minutes	30 minutes	45 minutes
Wayfarer	90 minutes	30 minutes	45 minutes

- 13.2 If no boat has passed Mark 1 within the Mark 1 time limit the race will be abandoned. Failure to meet the target time will not be grounds for redress. This changes RRS 62.1(a).
- 13.3 Boats failing to finish within 20 minutes after the first boat sails the course and finishes will be scored Did Not Finish without a hearing. This changes RRS 35, A4 and A5.
- 13.4 Finishing on Course: The Race Committee may, at its discretion, award points to a boat, equivalent to the boat's position in a race, prior to the expiration of the Finishing Window. The Race Committee determines the method and order. This changes RRS 35, A4 and A5

14. PROTESTS AND REQUESTS FOR REDRESS

- 14.1 Protest forms are available at the RCYC Sailing Office. Protests and requests for redress or reopening shall be delivered there within the appropriate time limit.
- 14.2 For each class, the protest time limit is 45 minutes after the finish boat for that course returns to the dock.
- 14.3 Notices will be posted no later than 30 minutes after the protest time limit to inform competitors of hearings in which they are parties or named as witnesses. Hearings will be held in the protest room, located at in the protest room, located at south end of the main clubhouse.
- 14.4 Notices of protests by the race committee, technical committee or protest committee will be posted to inform boats under RRS 61.1(b).

15. SCORING

- 15.1 Two races are required to be completed to constitute a series.
 - (a) When fewer than 5 races have been completed, a boat's series score will be the total of her race scores.
 - (b) When from 5 or more races have been completed, a boat's series score will be the total of her race scores excluding her worst score.

16. SAFETY REGULATIONS

- 16.1 Check-Out and Check-In: Each boat shall sail behind the stern of the Race Committee Vessel and check in prior to racing each day or upon returning to the race area if the boat has left for repair or any other reason. [DP] [NP]
- 16.2 A boat that retires from a race shall notify the race committee as soon as possible. [DP] [NP]

17. REPLACEMENT OF CREW OR EQUIPMENT

- 17.1 Substitution of competitors will not be allowed without prior written approval of the race committee. [DP]

18. EQUIPMENT AND MEASUREMENT CHECKS

- 18.1 On the water, a boat can be instructed by a member of the race committee or the technical committee to proceed immediately to a designated area for inspection.

19. SUPPORT BOATS

- 19.1 Team leaders, coaches and other support persons shall stay outside areas where boats are racing from the time of the preparatory signal for the first class to start until all boats have finished or retired or the race committee signals a postponement, general recall or abandonment. [DP] [NP]
- 19.2 In a general emergency, all support boats shall be utilized as safety boats and be under the direction of the course race officer.

20. TRASH DISPOSAL

- 20.1 Trash may be placed aboard support or official boats.

21. RADIO COMMUNICATION

- 21.1 Except in an emergency, a boat that is racing shall not make voice or data transmissions and shall not receive voice or data communication that is not available to all boats. [DP] [NP]

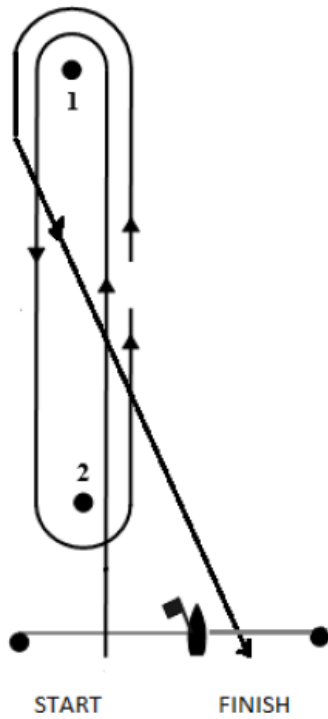
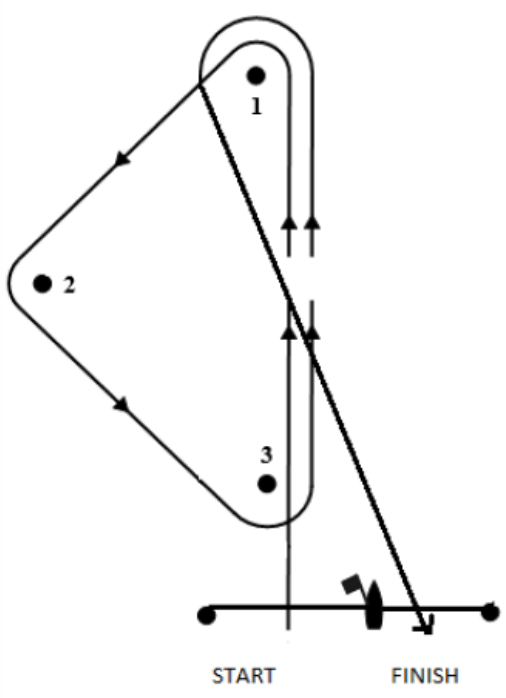
22. PRIZES

- 22.1 Prizes will be given as follows: 1st, 2nd, and 3rd place finishers as well as any other prizes the organizers deem deserved.
- 22.2 The Ontario Championship Trophy will be awarded to the winning boat of the Albacore Fleet.

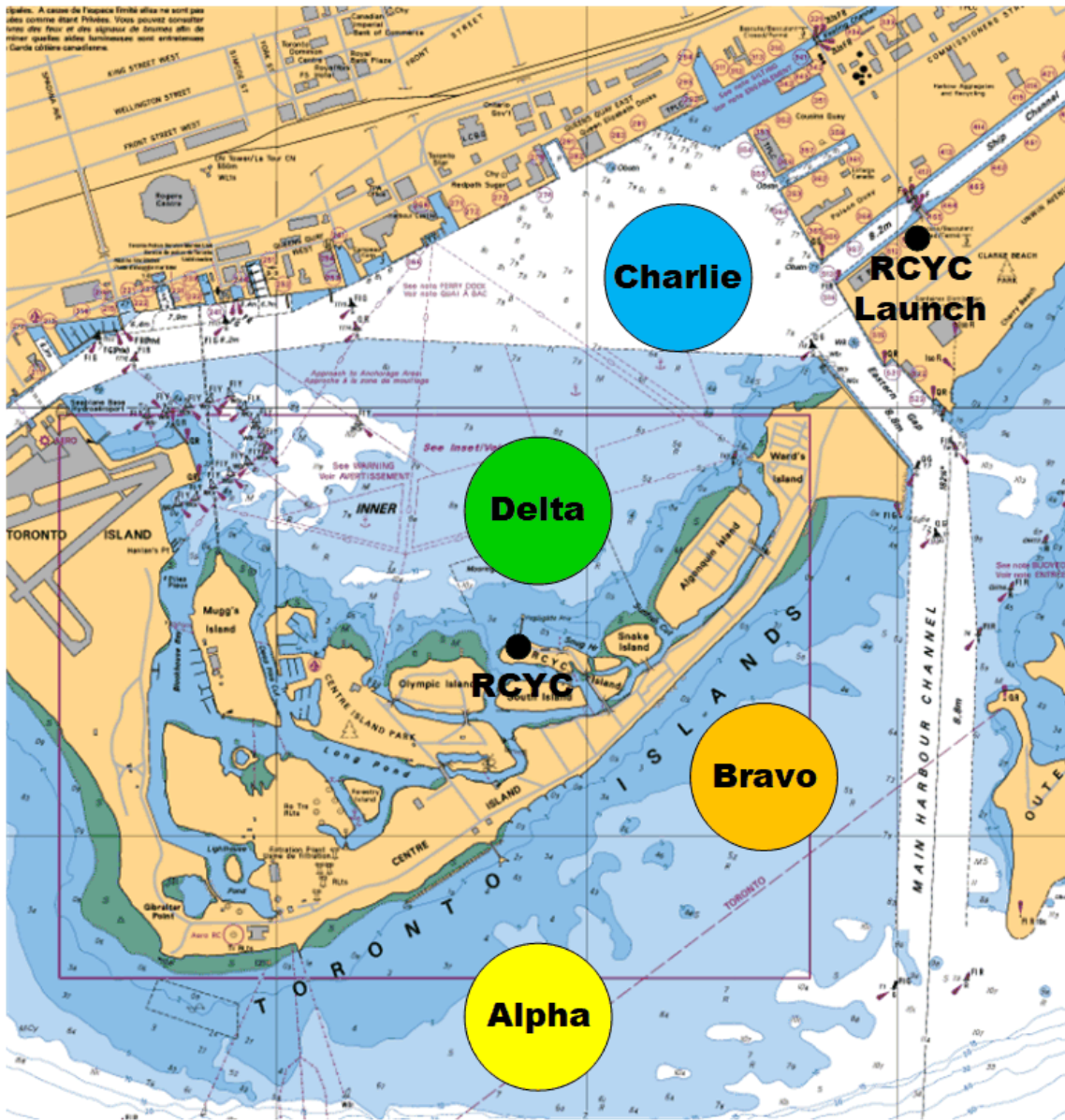
23. DISCLAIMER OF LIABILITY

- 23.1 Competitors participate in the regatta entirely at their own risk. See RRS 4, Decision to Race. The organizing authority will not accept any liability for material damage or personal injury or death sustained in conjunction with or prior to, during, or after the regatta.

ADDENDUM A – COURSES

Course W	Course T
Start – 1 – 2 – 1 – Finish	Start – 1 – 2 – 3 – 1 – Finish
 <p>The diagram for Course W shows a start line on the left and a finish line on the right. A vertical line runs between them. A hole-in-one is located at the bottom of this vertical line. A path starts at the start line, goes up and left to a hole-in-one labeled '1' at the top of a U-shaped area. From '1', the path goes down and left to a hole-in-one labeled '2' at the bottom of the U-shaped area. From '2', the path goes up and right to the finish line. Arrows indicate the direction of travel.</p>	 <p>The diagram for Course T shows a start line on the left and a finish line on the right. A vertical line runs between them. A hole-in-one is located at the bottom of this vertical line. A path starts at the start line, goes up and left to a hole-in-one labeled '1' at the top of a U-shaped area. From '1', the path goes down and left to a hole-in-one labeled '2' on the left side of the U-shaped area. From '2', the path goes down and right to a hole-in-one labeled '3' at the bottom of the U-shaped area. From '3', the path goes up and right to the finish line. Arrows indicate the direction of travel.</p>

ADDENDUM B – RACE AREAS



Race Committee VHF Channels

	Alpha	Bravo	Charlie	Delta
Channel	9	71	69	72